



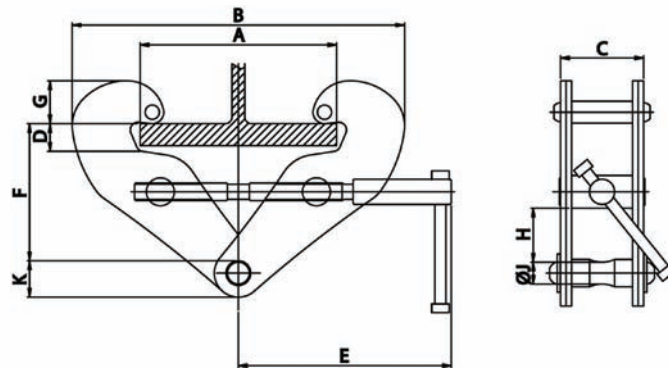
Beam Clamps

Part No.	Lifting Capacity tons	Flange Widths in.	Net Weight lbs.
BC-1	1.0	2.95 - 8.25	8.8
BC-2	2.0	2.95 - 8.25	10.1
BC-3	3.0	2.95 - 12.0	18.5
BC-5	5.0	2.95 - 12.0	21.1

FEATURES

- Available in 1 to 5 ton capacities from 2.95" to 12" flange widths.
- Precision machined adjustment screw allows for quick, easy, and secure clamping to a variety of flange widths.
- Lightweight design and threaded adjustment screw allow for easy portability and installation.
- Compact design requires low headroom.
- Ideal for attaching to steel beams as a semi permanent lifting point to be used in combination with chain hoists & lever hoists.
- Can also be used to lift or transport steel beams.
- Tested to 150% of rated capacity. Test certificate included with every beam clamp.
- CE certified and compliant with ANSI B30.11 specifications.

Beam Clamp Specifications



Capacity tons	Test Load tons	Net Weight lbs.	A inch	B inch	C inch	D inch	E inch	F inch	G inch	J inch	K inch
1	1.5	8.8	3 - 8.3	7.2 - 13	3	1	7.5	5.7 - 4.6	2.1 - 1.5	0.8	1.3
2	3	10.1	3 - 8.3	7.2 - 13	3.3	1	7.5	5.7 - 4.6	2.1 - 1.5	0.8	1.3
3	4.5	18.5	3 - 12	8.4 - 18.1	4.2	1.4	9.5	8.8 - 7.1	2.3 - 1.6	0.9	1.6
5	7.5	22	3 - 12	8.4 - 18.1	4.8	1.4	9.5	8.7 - 7	2.3 - 1.6	1.1	1.8